



## 堅尼地城前摩星嶺平房區公營房屋發展之工地平整及基礎設施工程 Site Formation and Infrastructure Works for Public Housing Development at Ex-Mount Davis Cottage Area in Kennedy Town

**歡**迎參閱堅尼地城前摩星嶺平房區公營房屋發展之工地平整及基礎設施工程（合約編號：SD/2022/01）的第十一期通訊。本通訊以季刊形式旨在提供是項工程的進度及相關工程資訊。

**W**elcome to the 11<sup>th</sup> issue of the Newsletter for Site Formation and Infrastructure Works for Public Housing Development at Ex-Mount Davis Cottage Area in Kennedy Town (Contract No.: SD/2022/01). This Newsletter provides you with the construction progress and other relevant information about the project on a quarterly basis.

### 工程簡介 Project Information

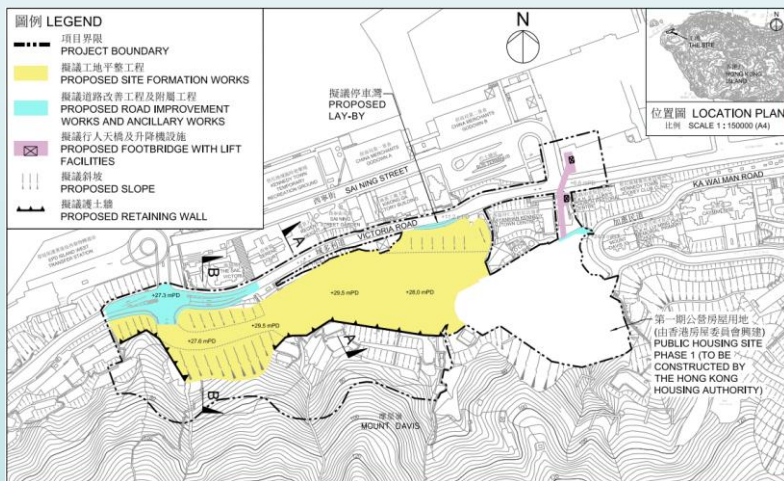
為配合堅尼地城的公營房屋發展，我們現正於前摩星嶺平房區進行工地平整工程，以及相關的基礎設施工程。

To facilitate the public housing development in Kennedy Town, we carry out site formation works and associated infrastructure works at Ex-Mount Davis Cottage Area.

工程動工日期：2022年10月31日 Contract Commencement Date: 31 October 2022  
預計完工日期：2026年底 Anticipated Completion Date: End 2026



# 工程範圍 Scope of Works



項目主要工程範圍包括：

- 進行工地平整和建造相關的護土牆和斜坡；
- 建造一條橫跨域多利道的行人天橋和升降機設施，以及相關行人路；
- 在域多利道建造停車灣和進行相關道路改善工程；
- 進行其他相關附屬工程，包括排水、排污、供水及環境美化工程。

The main scope of works includes:

- Site formation works and construction of associated retaining walls and slopes;
- Construction of a footbridge with lift facilities across Victoria Road, and associated footpath;
- Construction of a lay-by at Victoria Road and associated road improvement works;
- Ancillary works including drainage, sewerage, waterworks and landscaping works.

## 工程進度及挑戰 Project Progress and Challenges

正開展中的工程包括：

Works in progress include:



擋土牆混凝土結構工程  
Concreting Works for Retaining Wall



渠務工程  
Drainage Construction Works

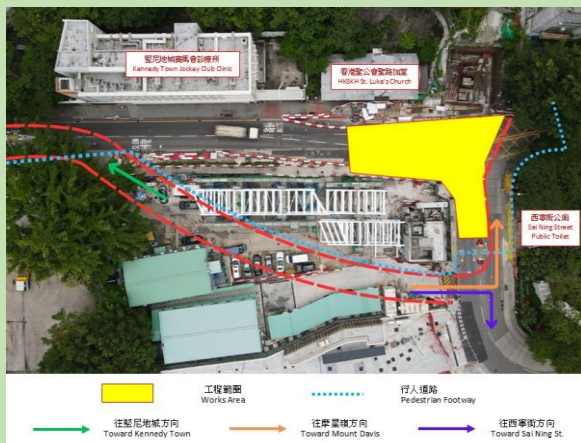


岩石開挖工程  
Rock Excavation Works



行人天橋組裝工程  
Footbridge Segments Assembly Works

## 臨時交通措施 Temporary Traffic Arrangement



- 為配合行人天橋吊運工程，沿域多利道(賽馬會診所外)至西寧街公廁交界路段，暫定於2025年11月底至12月初的其中兩個週日凌晨一點至五點半實施單線雙程行車改道安排。工程期間將提供至少4米寬的行車路及2米寬的行人路供公眾臨時使用。
- 屆時將會設置適當的指示牌指導駕駛人士及行人，以減低工程對附近持份者的影響。
- To facilitate the footbridge erection works, a temporary one-lane-two-way traffic diversion will be implemented at the junction of Victoria Road (outside the Jockey Club Clinic) and Sai Ning Street public toilet on two separate early mornings on Sundays from 1:00 a.m. to 5:30 a.m. between the end of November and early December 2025. A temporary single carriageway will be provided with at least 4 meters wide, and the temporary pedestrian crossings will be provided with at least 2-meter wide for public use;
- Appropriate signs will be erected to guide motorists and pedestrians to minimise the impact on nearby stakeholders.

## 紓減環境影響措施 Environmental Mitigation Measures



設置可重覆使用的隔音屏障  
Installation of Reusable  
Noise Barriers



定時向工地灑水  
Regularly Hose Works  
Area

- 在工程進行期間，工地周邊增設可重複使用的隔音屏障，以減低噪音；
- 安排工人定時向工地灑水，避免塵土飛揚。
- Cleaning up fallen leaves and broken branches after the inclement weather;
- Workers regularly hose the works area with water sprinklers to control dust.

## 未來三個月展開的工程 Construction Works in the Coming Three Months

在未來三個月，我們將繼續進行斜坡加固工程、擋土牆建造工程、階梯型渠道建造工程及行人天橋工程，包括建造升降機塔。

In the coming three months, we will continue with slope upgrading works, the construction of retaining walls, the construction of cascade channels, and the construction of lift towers for the footbridge.



## 社區聯絡工作 Community Liaison Works



為對鄰近社區表達關懷，土木工程拓展署及其工程團隊代表在中秋節前夕與鄰近持份者慶祝中秋節，並送上燈籠以示祝福。

To express care for the nearby community, CEDD and their site representatives celebrated the Mid-autumn festival with nearby stakeholders on the eve of the festival and presented lanterns as a gesture of blessing.

## 工程小知識 Construction Trivia 結構震動感測器 Structural Vibration Sensor



- 結構震動感測器監測三個方向的震動速度。採用結構性密封膠進行非破壞性安裝，不會破壞外牆結構。
- 由於震動感測器可以快速檢測方向變化並提供即時輸出訊號，這使得它們適合即時監控方向至關重要的應用。此外，即時上傳讀數至雲端伺服器，有助管理人員作進一步分析及制定方案。
- The structural vibration sensor provides the vibration speed in 3 directions. The non-destructive fixing method using structural sealant is adopted, which does not damage the exterior wall.
- As the vibration sensors can quickly detect orientation changes and provide an immediate output signal, this makes them suitable for applications where real-time monitoring of orientation is critical. In addition, instantly uploading the readings to the cloud server can help managers conduct further analysis and formulate plans.

## 資訊與聯絡 Information & Enquiries

如對位於加惠民道的第一期公營房屋工程項目有任何疑問或意見，可透過以下方法聯絡相關部門：

Should you have any enquiries or comments on Public Housing project Phase 1 at Ka Wai Man Road, please contact the Housing Department via the following:

- 房屋署熱線 / Housing Department Hotline ☎ : 9090 7713

如對本工程項目有任何疑問或意見，可透過以下方法聯絡我們：

Should you have any enquiries or comments on the project, please contact us via the following:

- 24小時熱線 / 24-hour Hotline ☎ : 9129 1080